

Abraham Kritzman

Abraham Kritzman (born 1983) lives and works in Tel Aviv and is Currently a Lecturer at Bezalel Academy Jerusalem. Kritzman is also a member and curator of Barbur Gallery Jerusalem.

Kritzman graduated with a BFA with honours from Bezalel Academy of Art and Design Jerusalem (2011), and MA from the Painting Programme at the Royal College of Art (2014). Selected solo and joint shows have been exhibited at: Artists' House Jerusalem, Danielle Arnaud Gallery London, Hezi Cohen Gallery Tel Aviv, Kav 16 Gallery Tel Aviv, Atelier 35 Bucharest, Elizabeth Xi Bauer, London, The Artists House Tel Aviv and Kayma Gallery Jaffa.

Selected group exhibitions include: Tel Aviv Museum of Art, SMAC South Africa, Ashdod Art Museum, The Negev Museum of Art Beer Sheva, Barbur Gallery, Benjamin Gallery, Elizabeth XI Bauer London, Blyth Gallery London, Arebyte Gallery London, Alfred Gallery, Bar David Museum Bar Am, Graduate Prize Show London, The Artists House Tel Aviv, Artist's Studios Jerusalem, Artspace Tel Aviv and Beit Binyanini Tel Aviv.

Prizes and awards include: Rappaport Prize for the Ruth and Baruch Rappaport Israeli Art Collection at the Tel Aviv Museum of Art, The Ministry Of Culture Award For Young Artist; Clore – Bezalel Scholarship for MA at the Royal College Of Art London; the Villiers David Travel Award from the Royal College of Art, Excellence Award for Achievements from Bezalel dep. of Fine Art; Milgat Leejay Levene Art Scholarship; the History and Theory Excellence Award from Bezalel; the Aileen Cooper Prize; The Herman Struk Prize for printmaking. Kritzman has also undertaken residencies at: ODD Bucharest, Arebyte London, Kav 16 gallery Tel Aviv.



Ashomon (Hand), 2019

Ceramic

16 x 18 x 10cm

£1500



Ashomon (Leopard), 2019

Ceramic

20 x24 x 3cm

£1500



Ashomon (Smoke), 2019

Ceramic

24 x 30 x 3cm

£1500



Traian's Smoke (Ashes), 2019

Ceramic

38 x 35 x 3cm

£1500



Traian's Smoke (Flowers), 2019

Ceramic

42 x 30 x 3cm

£1500



Traian's Smoke (Mud), 2019

Ceramic

45 x 37 x 3cm

£1500



Traian's Smokes in the Clouds (Fences), 2019

Ceramic

30 x 30 x 3cm

£1500



Terrace Tree 058, 2022

Ceramic

20 x 20 cm



Terrace Tree 061, 2022

Ceramic

15 x 20 cm



Terrace Tree 063, 2022

Ceramic

10 x 10 cm



Terrace Tree 064, 2022

Ceramic

35 x 35 cm



Exacto 1, 2020

2t, stoneware ceramics, watercolour on paper, wood

20 x 15 x 20cm



Exacto 2, 2020

2t, stoneware ceramics, watercolour on paper, wood

20 x 15 x 25cm



Exacto 3, 2020

2t, stoneware ceramics, watercolour on paper, wood

20 x 15 x 15cm



Exacto 4, 2020

2t, stoneware ceramics, watercolour on paper, wood

20 x 15 x 15cm



Back Lash, 2020

oil on board

each panel 40 x 30cm

diptych £6500



Between the Flowing Hills, 2020

oil on board

each panel 40 x 30cm

diptych £6500

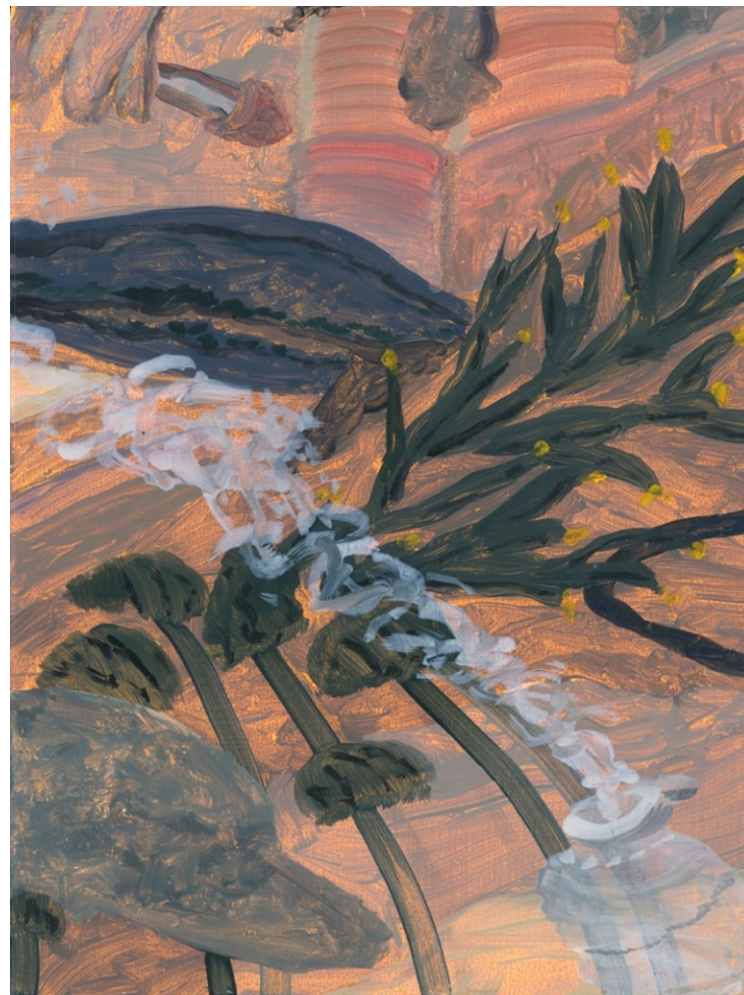


Leviathan, 2020

oil on board

each panel 40 x 30cm

diptych £6500

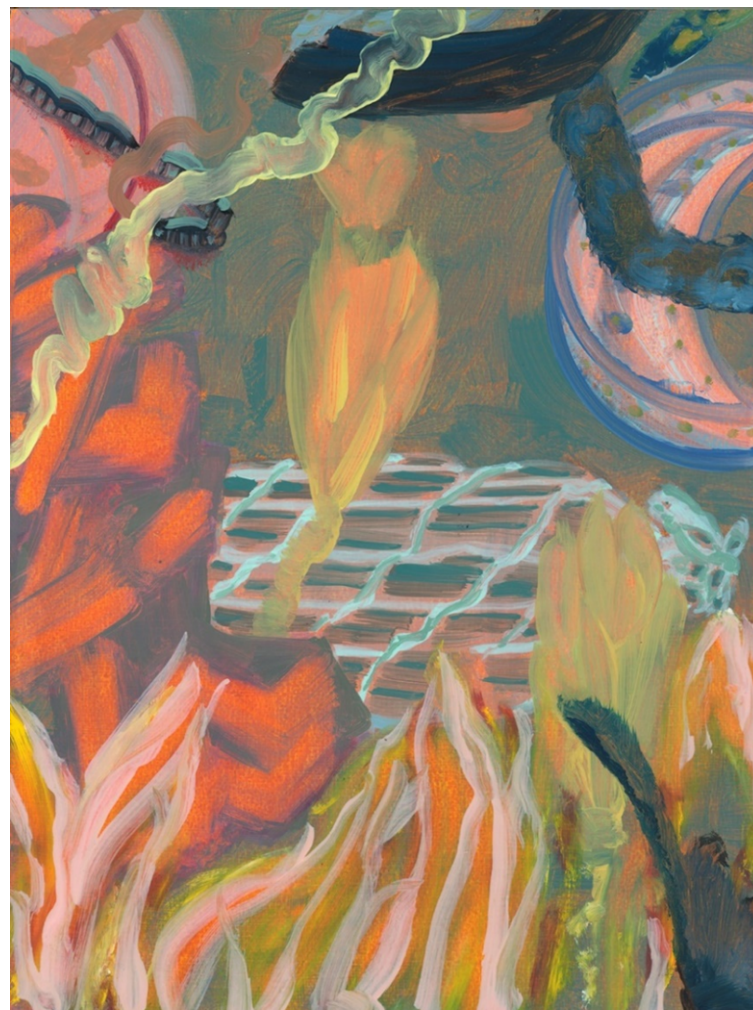


Pan, 2020

oil on board

each panel 40 x 30cm

diptych £6500

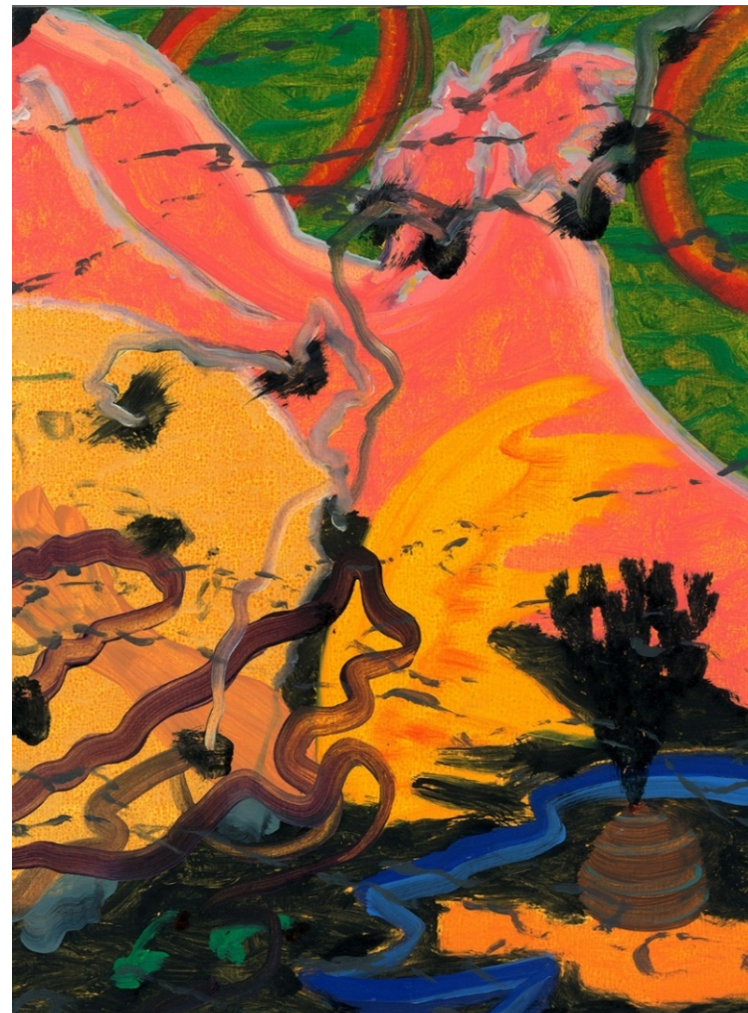


Tables, 2020

oil on board

each panel 40 x 30cm

diptych £6500



The Sultan's Secret Cave, 2020

oil on board

each panel 40 x 30cm

diptych £6500

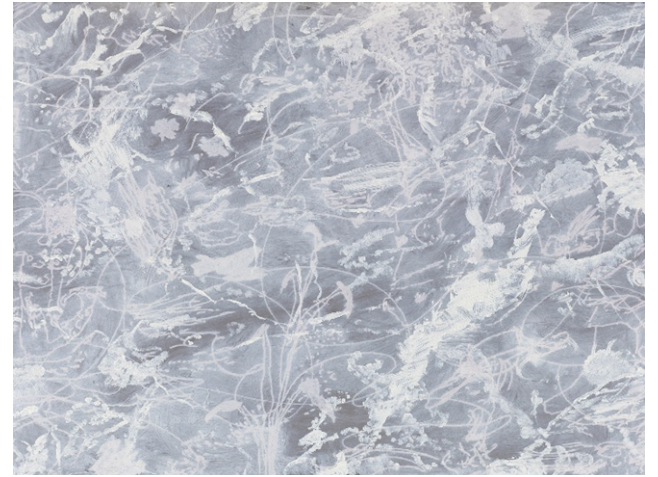
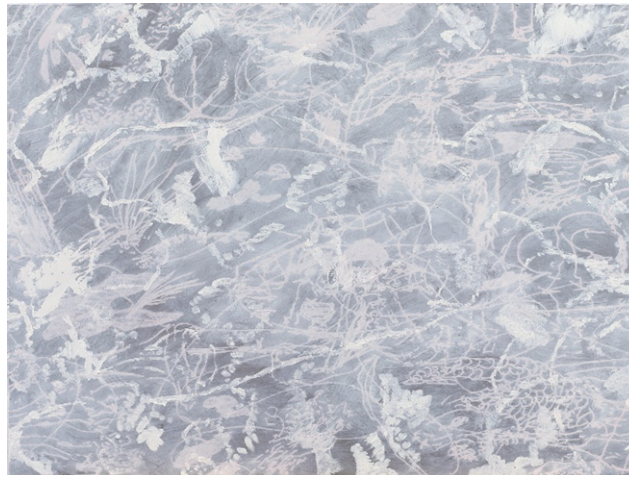


Mad Legs , 2019

oil on board

each panel 40 x 30cm

diptych £6500



Our Jumo to the Desert, 2021
Engraving and oil on aluminium
60 x 80cm



The Ivory Tower and his eyes square, 2020

Monotype woodcut

90 x 63cm



The Ivory Tower and the scales on top of it, 2020

Monotype woodcut

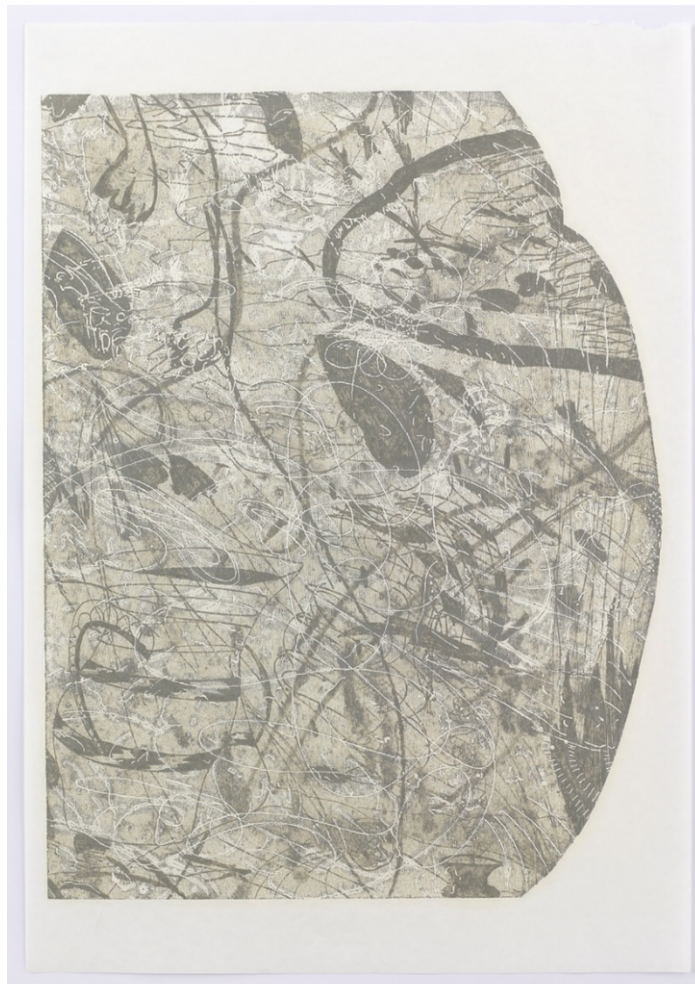
90 x 63cm



The Ivory Tower fire at the bottom, 2020

Monotype woodcut

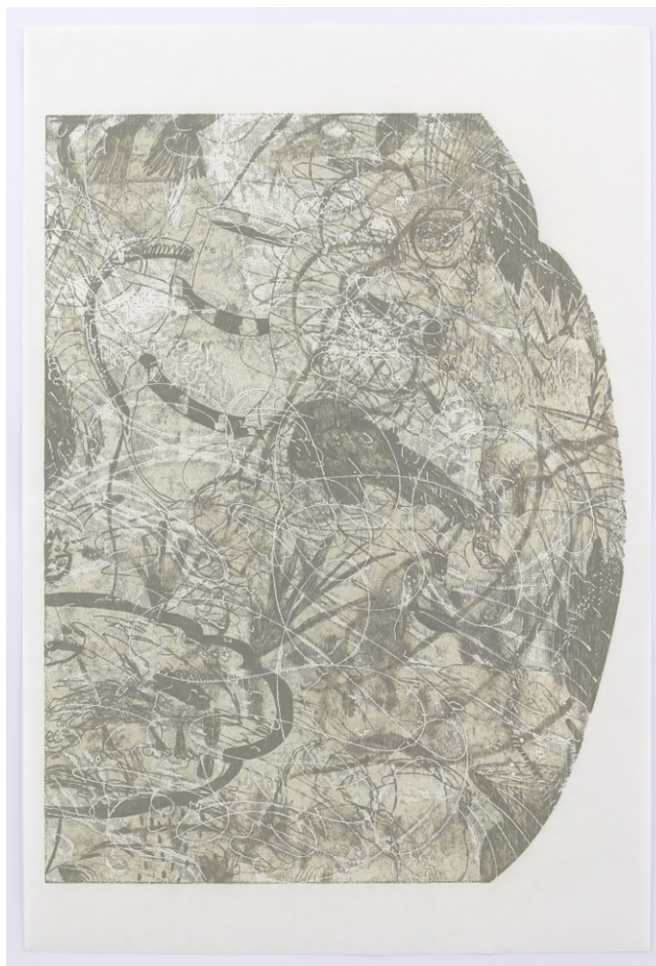
90 x 63cm



The Ivory Tower little belled flowers smoking, 2020

Monotype woodcut

90 x 63cm



The Ivory Tower two plants, 2020

Monotype woodcut

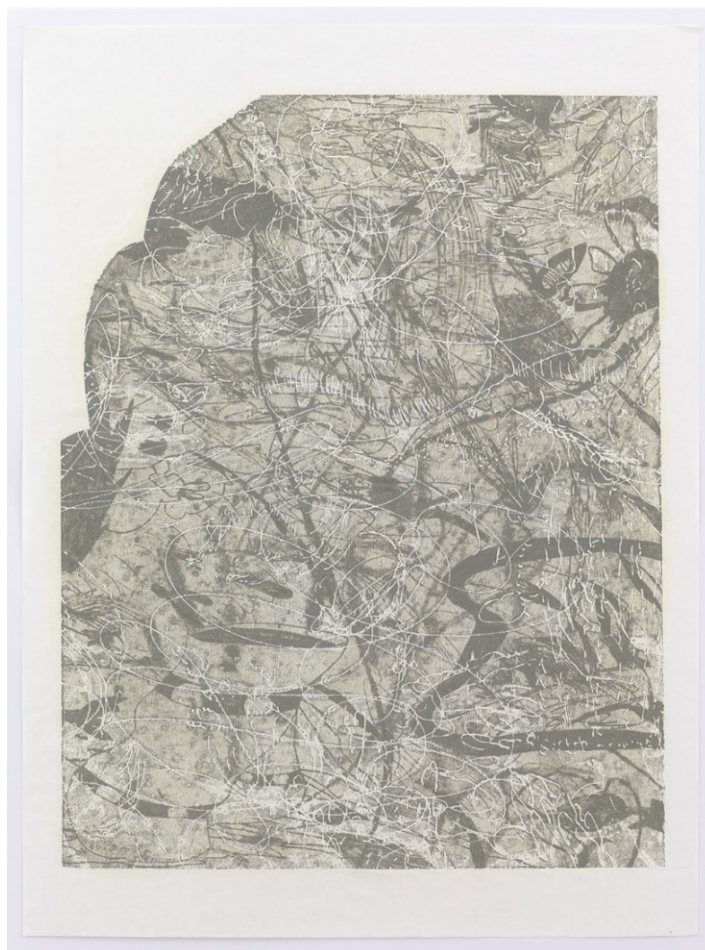
90 x 63cm



The Ivory Tower waiting for him outside, 2020

Monotype woodcut

90 x 63cm



The Ivory Tower when its raining

Monotype woodcut

90 x 63cm



The Necklace and The Pearl Dragon, 2019,

Woodcut

120 x 80cm



Hills 69

Ceramic

26 x 17 cm



Hills 70

Ceramic

26x17

For all enquiries, please contact danielle@daniellearnaud.com